

FM Stereo/AM Radio

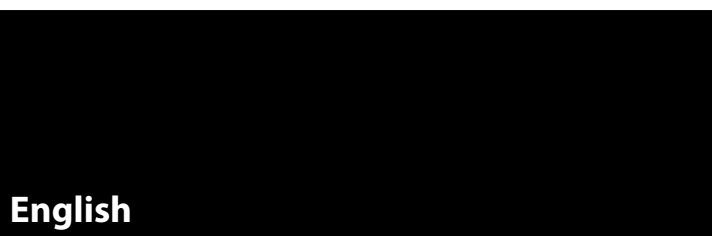
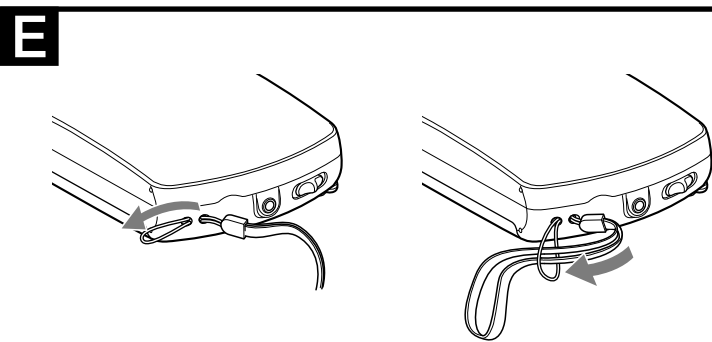
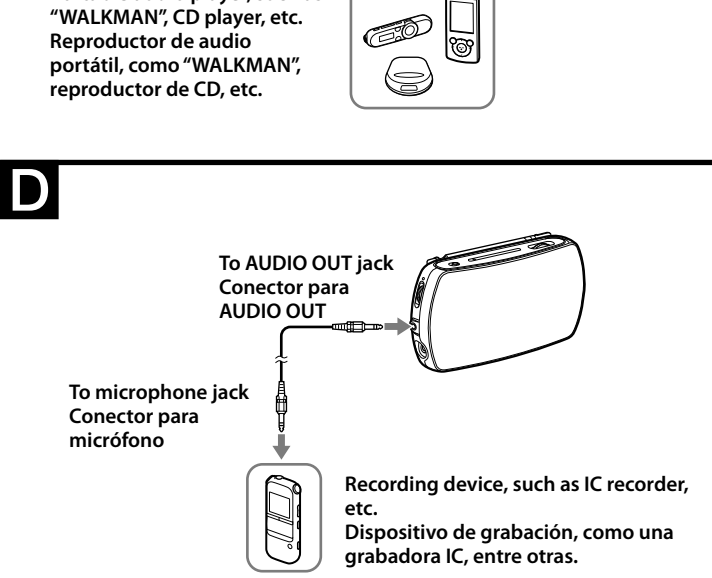
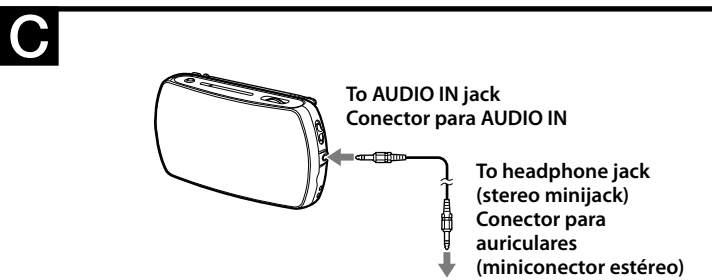
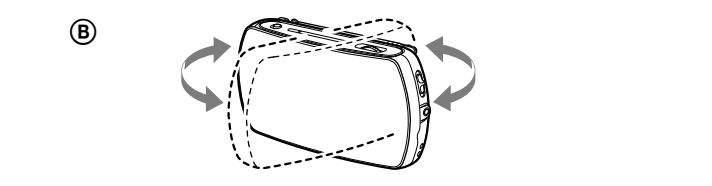
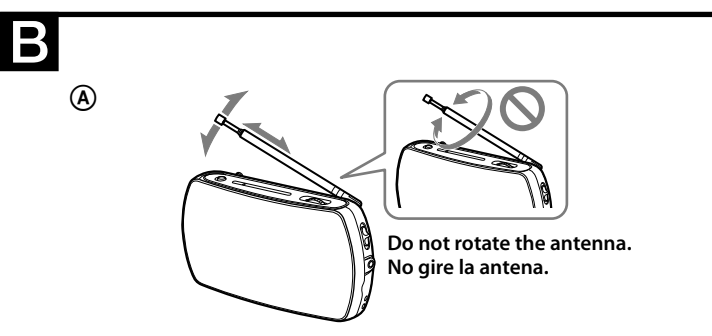
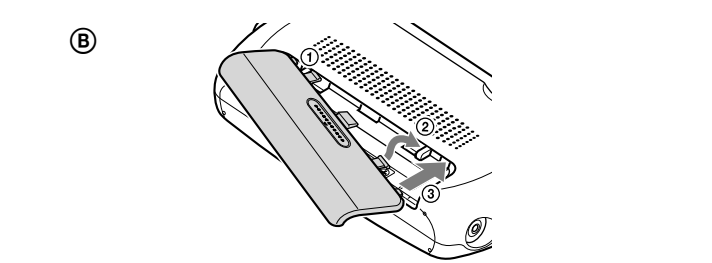
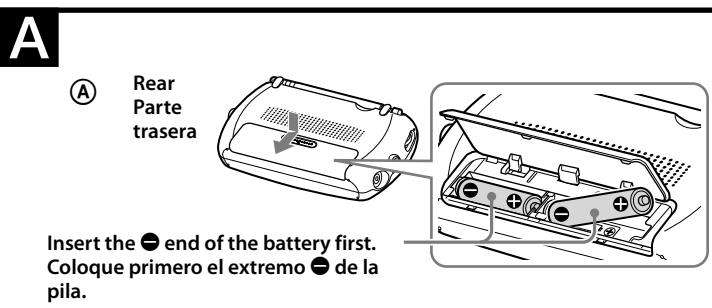
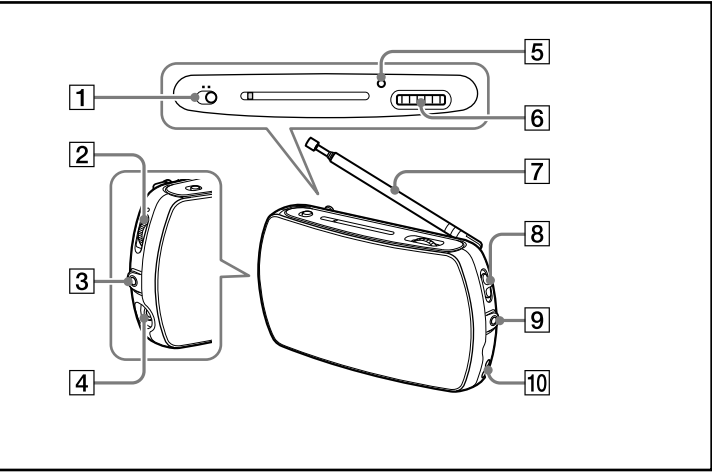
Operating Instructions
Manual de instrucciones
使用説明書
사용설명서



* 4 2 9 7 9 6 3 2 1 *

©2012 Sony Corporation Printed in China <http://www.sony.net/>

SRF-18



English

WARNING

You are cautioned that any changes or modifications not expressly approved in this manual could void your authority to operate this equipment.

Features

- TUNE** indicator for easy tuning
- AUDIO IN** jack for connecting to optional components such as "WALKMAN", etc.
- AUDIO OUT** jack which is convenient for radio recording

Identifying Parts

- FM/AM** switch
- VOL** dial*
- AUDIO OUT** jack
- 🔊 (headphones) jack
- TUNE** indicator
- TUNING** dial
- Telescopic antenna
- POWER** switch (**RADIO/AUDIO IN/OFF**)
- AUDIO IN** jack
- Holes for hand strap

* There is a tactile dot beside the **VOL** dial to show the direction to turn up the volume.

Installing the Batteries (See fig. A-(A)-(A))

- Open the battery compartment lid.
- Insert two Sony size AA (R6) batteries (not supplied) with the **+** and **-** marks oriented correctly.
- Close the lid.

Battery life (when using the speakers) (JEITA*)

(approx. hours)

When using	FM	AM	Audio input
Sony alkaline size AA (LR6)	45	49	74
Sony size AA (R6)	14	16	26

* Measured by JEITA (Japan Electronics and Information Technology Industries Association) standards. The actual battery life may vary depending on the circumstance of the unit.

When to replace the batteries

When the batteries become weak, the sound becomes weak or distorted, or the **TUNE** indicator becomes dim. In this case, replace both batteries with new ones.

Notes on batteries

- Do not charge the dry batteries.
- Do not carry the dry batteries with coins or other metallic objects. It can generate heat if the positive and negative terminals of the batteries are accidentally contacted by a metallic object.
- Do not use different types of batteries at the same time.
- When you replace the batteries, replace all with new ones.
- When you are not going to use the unit for a long time, remove the batteries to avoid damage from battery leakage and corrosion.

To attach the battery compartment lid if it is accidentally detached (See fig. A-(B)-(B))

The battery compartment lid is designed to come off when opened with excessive force. To put it back on, see the following and fig. **A** **🔔**.

- Insert the left hook of the lid into the left hole in the unit.
- Hang the right hook on the right part of the compartment where the lid fits.
- Slide the right hook into the right hole in the unit.

Playing the Radio

- Set the **POWER** switch to **RADIO**.
- Set the **FM/AM** switch to **FM** or **AM**.
- Tune in to a station using **TUNING**. The **TUNE** indicator lights up when a station is tuned in.
- Adjust the volume using **VOL**.

To turn off the radio

Set the **POWER** switch to **OFF**.

To listen by headphones (not supplied)

Connect the headphones to the 🔊 (headphones) jack. The speakers are muted when headphones are connected.

This unit cannot be used with the headphones supplied with a "WALKMAN" that has the Noise Canceling function.

Note
When listening to the radio, disconnect the audio connecting cable from the **AUDIO IN** jack of the unit, or noise may be heard.

Improving the Reception (See fig. B)

FM:

Extend the telescopic antenna and adjust the angle for the optimum reception (See fig. **B** **🔔**).

- Adjust the direction of the antenna by holding the bottom of it. Note that the antenna may be damaged if you move it with excessive force.

AM:

The radio has a built-in ferrite bar antenna. Rotate the unit horizontally for optimum reception (See fig. **B** **🔔**).

- In vehicles or in buildings, radio reception may be difficult. Try listening near a window.

Connecting Optional Components (See fig. C)

You can connect an optional component, such as a portable music player, "WALKMAN", etc., to the unit using the supplied audio connecting cable.

You can enjoy sound from an optional component through the speakers of the unit.

- Connect the **AUDIO IN** jack to the headphone jack of the component using the supplied audio connecting cable.
- Set the **POWER** switch to **AUDIO IN**.
- Turn on the connected component. Start playing sound and adjust the volume of the connected component.
- Adjust the volume using **VOL** of the unit.
 - If the volume is too low, increase the volume of the connected component.

To turn off the unit

Make sure to set the **POWER** switch to **OFF** after listening. If the connected component is not playing back (no sound from speakers), the unit will not turn off when the **POWER** switch is set to **AUDIO IN**.

Tip
To enjoy better sound, adjust the volume of the connected component, and then adjust the volume of the unit.

Notes

- If a connected portable music player, such as "WALKMAN", has a bass boost function, set to off. This may cause distortion.
- If connected to the monoaural output jack of a connected component, sound may not come through the right speaker of the unit.
- If connected to a fixed output such as the LINE OUT jack of the connected component, distortion may occur. If the sound is distorted, connect to the headphone jack instead.
- If the volume of the connected component is too high, the sound may be distorted.

Recording the Radio (See fig. D)

You can record the sound of the radio to a recording device, such as an IC recorder, etc.

- Connect the recording device using the supplied audio connecting cable (See fig. **D**).
 - When using a Sony IC Recorder, select "Audio IN" for external input. If selecting "MIC IN", the recorded sound will be distorted.
 - If using the microphone input jack of a tape recorder, the recorded sound will be distorted. Use the external input jack.

- Set the **POWER** switch to **RADIO**, and tune in a desired station.
- Start recording on the recording device.
 - For details about recording and the connecting cable, refer to the operating instructions of the recording device.

Notes

- Keep the unit away from the recording device while recording. Noise may be heard in the recorded sound.
- Do not touch the unit, the audio connecting cable or the recording device while recording. Noise may be heard in the recorded sound.
- The **AUDIO OUT** jack outputs only radio signal received by this unit. The sound from the component connected to the **AUDIO IN** jack will not be output.
- Depending on the recording device, if no sound is output for more than 2 seconds, recording may pause automatically, and the recording device may enter sound detection status. When sound is detected again, recording may resume from a new track.
 - The volume level output from the **AUDIO OUT** jack is fixed, and not affected by the **VOL** dial.

- When you have finished recording, stop recording on the connected device.

Listening to the Radio from External Equipment

You can connect the **AUDIO OUT** jack to the AUDIO IN jack or LINE IN jack of external equipment using the audio connecting cable. Radio signal received by the unit can be listened to through the connected equipment. Sound is also output from the speakers of the unit. Adjust the volume using **VOL**.

Note
Due to interference from the connected equipment, radio signal may be not received, or the sensitivity of the unit may be lower.

Attaching the Hand Strap (See fig. E)

For convenient carrying, attach the hand strap to the unit. Thread the hand strap through the holes in the side of the unit.

Precautions

- Operate the unit only on 3 V DC, with two size AA batteries.
 - The nameplate indicating operating voltage, etc., is located on the bottom exterior.
 - Avoid exposure to temperature extremes, direct sunlight, moisture, sand, dust or mechanical shock.
 - The **AUDIO OUT** jack outputs only radio signal received by this unit. The sound from the component connected to the **AUDIO IN** jack will not be output.
 - Depending on the recording device, if no sound is output for more than 2 seconds, recording may pause automatically, and the recording device may enter sound detection status. When sound is detected again, recording may resume from a new track.
 - The volume level output from the **AUDIO OUT** jack is fixed, and not affected by the **VOL** dial.
- When you have finished recording, stop recording on the connected device.

- Do not touch the unit, the audio connecting cable or the recording device while recording. Noise may be heard in the recorded sound.
- The **AUDIO OUT** jack outputs only radio signal received by this unit. The sound from the component connected to the **AUDIO IN** jack will not be output.
- Depending on the recording device, if no sound is output for more than 2 seconds, recording may pause automatically, and the recording device may enter sound detection status. When sound is detected again, recording may resume from a new track.
 - The volume level output from the **AUDIO OUT** jack is fixed, and not affected by the **VOL** dial.

Note
Due to interference from the connected equipment, radio signal may be not received, or the sensitivity of the unit may be lower.

Note
Due to interference from the connected equipment, radio signal may be not received, or the sensitivity of the unit may be lower.

Note
Due to interference from the connected equipment, radio signal may be not received, or the sensitivity of the unit may be lower.

Note
Due to interference from the connected equipment, radio signal may be not received, or the sensitivity of the unit may be lower.

Note
Due to interference from the connected equipment, radio signal may be not received, or the sensitivity of the unit may be lower.

Note
Due to interference from the connected equipment, radio signal may be not received, or the sensitivity of the unit may be lower.

Note
Due to interference from the connected equipment, radio signal may be not received, or the sensitivity of the unit may be lower.

Note
Due to interference from the connected equipment, radio signal may be not received, or the sensitivity of the unit may be lower.

Troubleshooting

There is no sound from the radio.

- Make sure the batteries are inserted correctly.
- The batteries are weak. When using rechargeable batteries, charge the batteries. When using dry cell batteries, replace them all with new ones.
- The volume level is set to minimum. Turn up the volume of the unit.

The audio is weak or poor quality.

- The batteries are weak. When using rechargeable batteries, charge the batteries. When using dry cell batteries, replace them all with new ones.
- The radio signal is weak. Listen to the radio near a window since the signal may be weak inside buildings or in vehicles.
- Someone is using a cell phone, or other equipment that emits radio waves near the unit. Move the cell phone, etc., away from the unit.
- Move the unit away from possible sources of interference, such as a nearby TV.
- There is noise, or distorted sound when the audio signal is input from a connected component.**
- Turn down the volume of the connected component.
- If a connected component has a bass boost function, set to off.
- The batteries are weak. When using rechargeable batteries, charge the batteries. When using dry cell batteries, replace them all with new ones.
- Make sure the connecting cable is securely connected.
- If connected to the LINE OUT jack of a connected component, connect to the headphone jack instead.

The sound is low, or there is no sound while audio signal is input from a connected component.

- If the **POWER** switch is set to **OFF**, set to **AUDIO IN**.
- The volume level is set to minimum. Turn up the volume of the unit.
- The volume level of the connected component is set to minimum. Turn up the volume of the connected component.
- Make sure the connecting cable is securely connected.
- The batteries are weak. When using rechargeable batteries, charge the batteries. When using dry cell batteries, replace them all with new ones.
- Recorded radio sound is distorted, or noise is generated.**
- The setting of the recording device is not correct. See notes in "Recording the radio" or refer to the Operating Instructions of the recording device.

Specifications

Frequency range:
FM: 87.5 MHz - 108 MHz
AM: 530 kHz - 1,710 kHz

Speaker:

Approx. 3.6 cm (1 7/16 inches) dia, 7.2 Ω (2)

Input:

AUDIO IN jack (ø 3.5 mm stereo minijack) (1)

Outputs:
🔊 (headphones) jack (ø 3.5 mm stereo minijack) (1)
AUDIO OUT jack (ø 3.5 mm stereo minijack) (1)

Power output:
80 mW + 80 mW (JEITA*)

Power requirements:

3 V DC, two size AA (R6) batteries

Dimensions:

Approx. 155 mm × 78.5 mm × 32.5 mm (6 1/8 inches × 3 1/8 inches × 1 3/16 inches) (w/h/d, projecting parts not included)
Approx. 155.4 mm × 80.3 mm × 34.2 mm (6 1/8 inches × 3 1/8 inches × 1 3/16 inches) (w/h/d, projecting parts included) (JEITA*)

Mass:

Approx. 198 g (7 oz) (batteries included)

* JEITA (Japan Electronics and Information Technology Industries Association) standards.

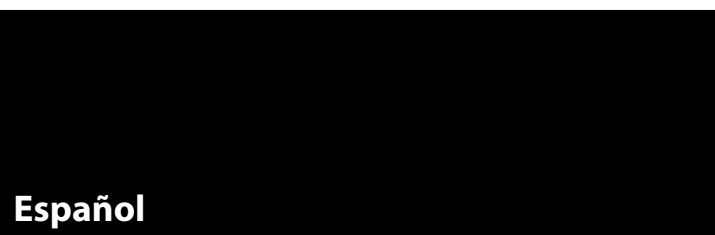
Supplied accessories

Operating Instructions (1)
Audio connecting cable (stereo mini plug ↔ stereo mini plug) (1)

Design and specifications are subject to change without notice.

On Copyrights

"WALKMAN" and "WALKMAN" logo are registered trademarks of Sony Corporation.



ADVERTENCIA

RADIO AM/FM PORTÁTIL
Por favor lea detalladamente este manual de instrucciones antes de conectar y operar este equipo.
Recuerde que un mal uso de su aparato podría anular la garantía.

Se le advierte que cualquier cambio o modificación no autorizada expresamente en este manual podrá anular la autorización que usted tiene para utilizar este equipo.

Toda alteración o cambio que no se apruebe, de manera expresa, a través del presente manual podría anular sus facultades para operar el presente equipo.

Características

- Indicador **TUNE** para lograr una fácil sintonización.
- Conector **AUDIO IN** para conectar el equipo a componentes opcionales como un "WALKMAN", entre otros.
- Conector **AUDIO OUT** que es útil para grabar radio.

Identificación de las piezas

- Interruptor **FM/AM**
- Perilla **VOL***
- Conector **AUDIO OUT**
- Conector 🔊 (auriculares)
- Indicador **TUNE**
- Perilla **TUNING**
- Antena telescópica
- Interruptor **POWER (RADIO/AUDIO IN/OFF)**
- Conector **AUDIO IN**
- Orificios para correa de mano
- Al lado del perilla **VOL** hay un punto táctil para mostrar la dirección en la que se sube el volumen.

Cómo colocar las pilas (consulte la figura A-(A)-(A))

- Abra la tapa del compartimiento de las pilas.
- Inserte dos pilas R6 Sony (tamaño AA) (no suministradas) con las marcas **+** y **-** orientadas correctamente.
- Cierre la tapa.

Duración de la pila (cuando use los altavoces) (JEITA*) (horas aprox.)

Cuando use	FM	AM	Entrada de audio
Sony LR6 alcalina (tamaño AA)	45	49	74
Sony R6 (tamaño AA)	14	16	26

* Medido por las normas de la asociación JEITA (Japan Electronics and Information Technology Industries Association). La duración real de la pila puede variar según la circunstancia del equipo.

Cuándo cambiar las pilas

Cuando las pilas tienen poca carga, el sonido se escucha bajo o distorsionado, o el indicador **TUNE** aparece poco iluminado. En este caso, cambie las dos pilas por pilas nuevas.

Notas sobre las pilas

- No cargue las pilas secas.
- No lleve las pilas secas con monedas u otros objetos metálicos. Puede generarse calor si los terminales positivos y negativos de las pilas accidentalmente entran en contacto con un objeto metálico.
- No use diferentes tipos de pilas al mismo tiempo.
- Cuando cambie las pilas, cámbielas todas por pilas nuevas.
- Cuando no vaya a usar el equipo por un largo período, quite las pilas para evitar el daño que podría causar la corrosión o la fuga del líquido de las pilas.

Cómo fijar la tapa del compartimiento de las pilas si se sale accidentalmente (consulte la figura A-(B)-(B))

La tapa del compartimiento de las pilas está diseñada para que se salga cuando se la abre con mucha fuerza. Para volver a colocarla, lea estas instrucciones y consulte la figura **A** **🔔**.

- Coloque el gancho izquierdo de la tapa en el orificio izquierdo del equipo.
- Cuelgue el gancho derecho en la parte derecha del compartimiento donde engancha la tapa.
- Deslice el gancho derecho para que ingrese en el orificio derecho del equipo.

Cómo usar la radio

- Coloque el interruptor **POWER** en la posición **RADIO**.
- Ajuste el interruptor **FM/AM** en **FM** o **AM**.
- Sintonice una estación usando **TUNING**.
 - El indicador **TUNE** se enciende cuando se sintoniza una estación.
- Ajuste el volumen usando **VOL**.

Cómo apagar la radio

Coloque el interruptor **POWER** en la posición **OFF**.

Cómo escuchar con auriculares (no suministrados)

Conecte los auriculares al conector 🔊 (auriculares). Los altavoces se silencian cuando se conectan los auriculares.

Este equipo no se puede usar con los auriculares suministrados con un "WALKMAN" que tiene función de eliminación de ruido.

Nota

Cuando escuche la radio, desconecte el cable de conexión para audio del conector **AUDIO IN** del equipo; de lo contrario, es posible que escuche ruido.

Cómo mejorar la recepción (consulte la figura B)

FM:

Extienda la antena telescópica y ajuste el ángulo para obtener una recepción óptima (consulte la fig. **B** **🔔**).

- Ajuste la dirección de la antena ajustándola por la parte inferior.
- Tenga en cuenta que la antena se puede dañar si la mueve con demasiada fuerza.



AM:

La radio tiene una antena de barra de ferrita incorporada. Gire el equipo de forma horizontal para lograr una recepción óptima (consulte la figura **B** **🔔**).

En vehículos o en edificios, es posible que sea difícil lograr una buena recepción de la radio. Intente escucharla cerca de una ventana.

Cómo conectar componentes opcionales (consulte la figura C)

Puede conectar un componente opcional al equipo, como un reproductor de música portátil, un "WALKMAN", etc., usando el cable de conexión para audio suministrado.

Puede disfrutar del sonido de un componente opcional mediante los altavoces del equipo.

- Conecte el conector **AUDIO IN** al conector de auriculares del componente usando el cable de conexión para audio suministrado.
- Coloque el interruptor **POWER** en la posición **AUDIO IN**.
- Encienda el componente conectado. Comience a reproducir sonido y ajuste el volumen del componente conectado.
- Ajuste el volumen usando **VOL** del equipo.
 - Si el volumen está demasiado bajo, aumente el volumen del componente conectado.

Cómo apagar el equipo

Asegúrese de colocar el interruptor **POWER** en la posición **OFF** después de escuchar música. Si el componente conectado no reproduce sonido (no sale sonido de los altavoces), la unidad no se apagará cuando el interruptor **POWER** esté situado en **AUDIO IN**.

Consejo
Para disfrutar de una mejor calidad de sonido, ajuste el volumen del componente conectado y luego ajuste el volumen del equipo.

Notas

- Si un reproductor de música portátil conectado, como un "WALKMAN", tiene una función de potenciación de sonidos graves, desactívela. Esto puede causar una distorsión.
- Si el equipo está conectado al conector de salida monoaural de un componente conectado, es posible que el sonido no se emita por el altavoz adecuado del equipo.
- Si está conectado a una salida fija como por ejemplo al conector LINE OUT del componente conectado, es posible que haya distorsión. Si el sonido está distorsionado, use el conector de auriculares en su lugar.
- Si el volumen del componente conectado es demasiado alto, el sonido puede salir distorsionado.

Cómo grabar la radio (consulte la figura D)

Puede grabar el sonido de la radio en un dispositivo de grabación, como una grabadora IC, etc.

- Conecte el dispositivo de grabación usando el cable de conexión para audio suministrado (consulte la figura **D**).
</

